

SentryManager™

Monitor Multiple SentryScope™ Cameras from one Location



SentryManager screen shot

SentryScope is a revolution in video surveillance. Now, SentryScope cameras can be configured and monitored over the user's network.

Single or multiple monitoring locations

The SentryManager software package allows multiple SentryScope cameras to be monitored and controlled from one or more remote computers. Up to three SentryScope cameras can be simultaneously monitored on a single screen. A simple mouse click changes the display to another set of three, with virtually no limit to the number of cameras that can be viewed.

View live or recorded video

All SentryScope imaging capabilities are available through SentryManager. Remote stations can view live or recorded video, pan and zoom within images, use search features and advanced image enhancement tools.

Complete control for the surveillance manager

The SentryServer controlling each SentryScope camera is placed on the user's network during initial installation. SentryManager, operating with password protection, allows the surveillance manager to control and optimize each camera's operation, including:

- Operational Changes
such as focusing and turning cameras on and off
- Configuration Settings
including compression levels, recording modes, motion alarms, external triggers, and file storage
- Preventing Unauthorized Use
setting passwords and "no-view" regions
- Administrative Tasks
modify setup information, such as site and camera names; camera hardware settings, etc.

Minimizes hardware requirements

SentryManager eliminates the need for a dedicated monitor at each SentryScope camera. SentryManager can also run on the SentryServer controlling a SentryScope camera, for extra cost and space savings.



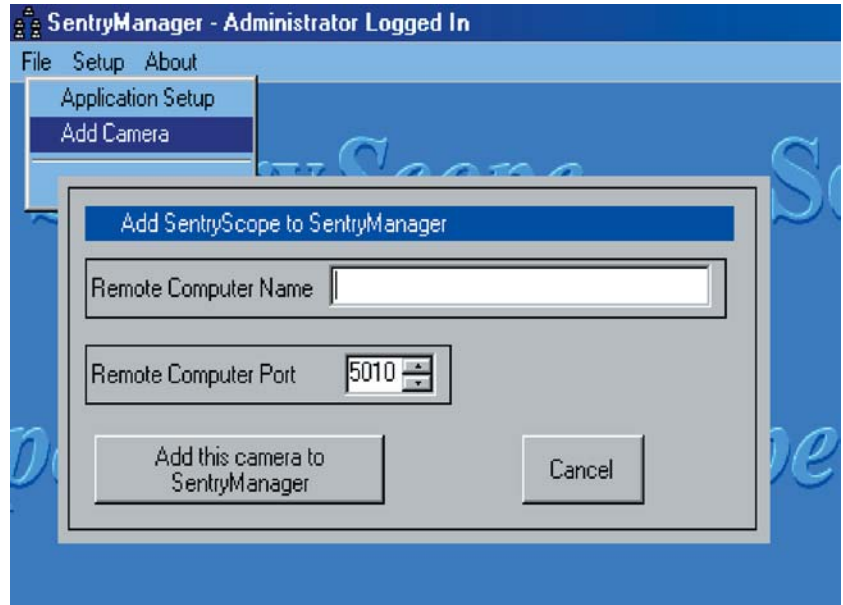
SentryManager is Easy to Setup, Secure, and Use

Quick installation

SentryManager only takes a few minutes to install. Simply insert the product CD into the desired computer and follow the setup wizard. Next, connect to each SentryScope camera on the network by entering its IP address (or SentryServer name) and port. In most cases nothing more is required, although other setup parameters can be configured by advanced network users. Usually only 5-10 minutes are needed for installation and setup.

Password protection

Advanced password protection insures that unauthorized persons cannot access camera images and operation. First, each SentryServer is assigned a unique password, and will not respond to communication over the network unless this password is supplied. Second, an administrative password insures that only the system manager can reconfigure camera operation. Third, an optional user password can be required each time that SentryManager is started. This is used to prevent unauthorized image viewing on computers in less secure areas. SentryManager fully encrypts all passwords during network communication.



Setup only requires a few entries.

The power of digital image processing

SentryManager, like SentryWare, provides the user with advanced computer processing tools. *Digital Sharpening* removes blur from images, improving the recognition of faces and license plates. *Digital Extract* (also called adaptive contrast) automatically brightens areas of the scene that are poorly illuminated, such as deep shadows. *Frame Averaging* is a powerful feature for viewing stationary objects at night, such as license plates, open doors, and suspicious packages.

Network connections

SentryManager can be run over all Local and Wide Area Networks (LAN and WAN). Approximately 0.5 Mbps of network bandwidth is required per user. Fast or Gigabit Ethernet connections are recommended for LANs. Cable modem, DSL, or T-1 connections are recommended for WAN applications. High speed wireless networks may also be used, including: 802.11a and 802.11g (54 Mbps). SentryManager can be run effectively on slower networks, such as 10 Mbps Ethernet and 802.11b (wireless 11 Mbps), as long as the network bandwidth is not exceeded. Dial-up and other very slow connections may also be used, but may experience significant delays in displaying images.

Computer requirements

- Windows® 98 or later
- Pentium IV, 1 GHz or faster; 256 Mbytes RAM
- 1024 x 768 or greater monitor resolution
- 15 Mbytes free disk space for SentryManager
- 2 Gbytes free disk space for the Microsoft .Net framework (if not already installed)



VCR-like buttons make reviewing images a snap.

Simple point and click operation

SentryManager has the same look and feel as SentryWare, providing video tools that are powerful and easy to use. Live or recorded video can be viewed from any SentryScope camera on the network. A simple VCR-like control panel allows many days or weeks of recorded video to be rapidly skimmed, or individual images to be scrutinized. Motion and alarm search tools allow events of interest to be quickly located. Display parameters, such as brightness, contrast, and gamma are automatically adjusted for the best image quality. Manual adjustment of these display parameters is seldom needed, but is always available through easy-to-use buttons on the screen. Clearly labeled controls and on-screen help messages make SentryManager easy to setup, learn and use.

Spectrum San Diego, Inc.

10907 Technology Place, San Diego, CA 92127
(858) 676-5382 f: (858) 676-5385 www.SentryScope.com

Specifications subject to change without notice.
Protected by U.S. Patent 6,757,008; other patents pending.
Windows is a registered trademark of Microsoft Corporation.
SentryScope, SentryWare, SentryManager, and SentryServer
are trademarks of Spectrum San Diego, Inc.